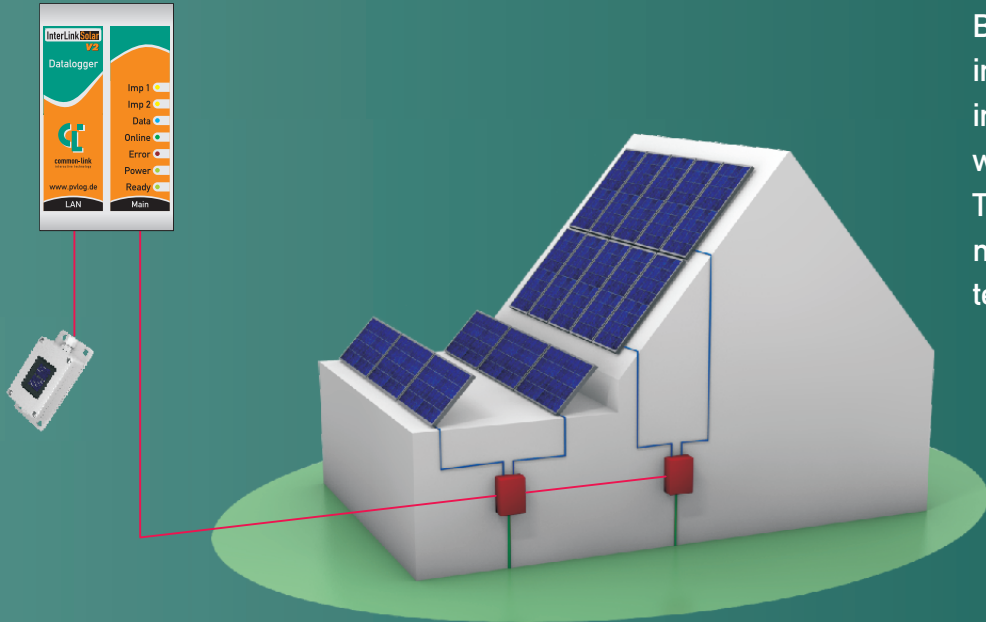


InterLink Solar

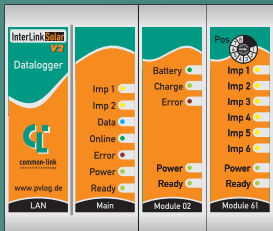
The monitoring system for all photovoltaic installations

Application examples

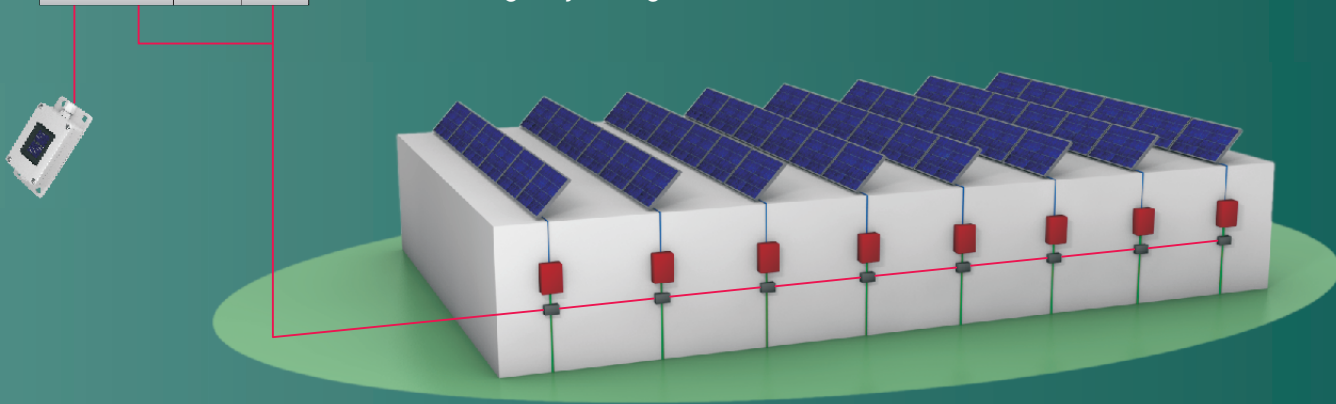


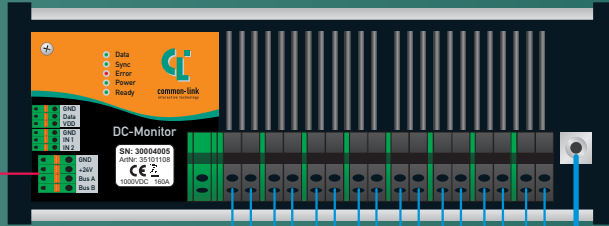
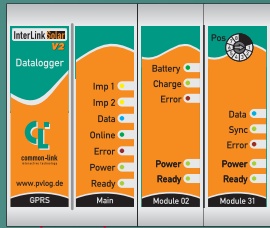


Basic version with two counter inputs for small and medium-sized installations particularly cost-effective with the LAN/DSL version. Two integral analog inputs for measuring irradiation and module temperature.

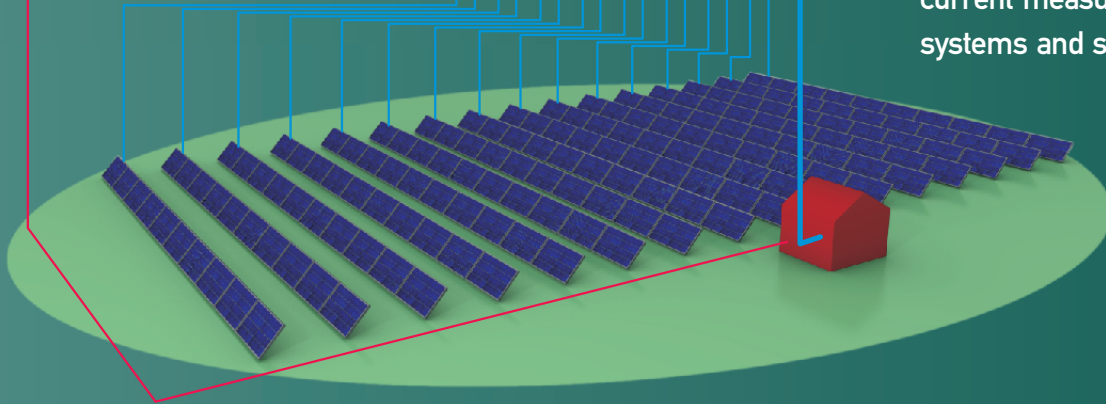


Modular extension for up to 50 counter inputs in large installations with string inverters. The required pulses are supplied by the S0 interfaces of the inverters or from precision power meters. Particularly independent is the GPRS version, optionally fitted with a module for reliable emergency energization.





The intelligent bus bar for measuring the string currents in the generator connecting compartment. Flexible scaling for up to 6400 individual string current measurements in large systems and solar parks.



Installation and calibration are quick and simple, and all adjustments of plant parameters and alarm options are carried out via our protected customer portal. In addition to the technical settings, investors, dealers, and installers have access to the tools for transparent customer administration and plant management.

Measurement data from the PV installation is stored in the datalogger, from where they are transferred regularly to our computing center. From here, the data are saved, evaluated, and made available - in case of a fault, alarms are generated and transmitted immediately.

The InterLink-Solar system provides all the tasks required to monitor PV installations from a single source, regardless of inverter type or plant size.



InterLink-Solar V2 GPRS with expansion module and emergency power supply unit

Conclusive graphical representations of yield supply all relevant information about the monitored plant's efficiency. Moreover, the yield graphics can be easily integrated into the installer's and/or plant operator's website, whereby individual adaptations are possible at any time. Export of the acquired data for further processing by the customer is possible from our customer portal.

The publicly accessible portal www.PvLog.de for solar data shows all the released PV installations, and provides additional information and technical data about the datalogger and its extensions.

Product of Common-Link AG

Koellestrasse 30b - 76189 Karlsruhe/Germany
Fon: +49(0)721-81968-300 - Fax: +49(0)721-81968-400
www.common-link.com - info@common-link.com

Sales only via registered installers and business partners.
Registration via www.PvLog.de

